

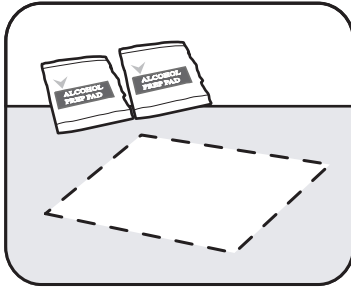
AnchorPad®

a Business Machine Security Company

Anchorpad a BMS Company 520 West Central Avenue Brea, CA. 92821

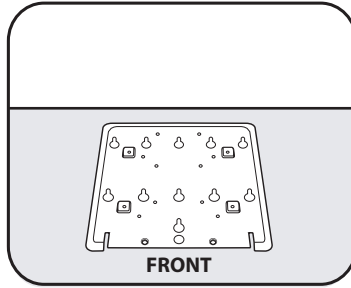
Toll-Free: 800.626.2467 | Fax: 714.990.5409 www.anchorpad.com

Double Plate w/Arm Installation Instructions



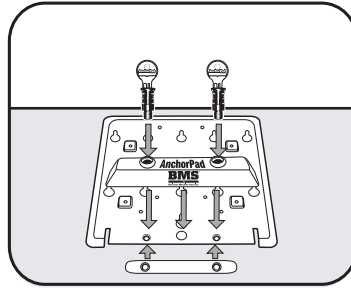
STEP 1:

With Alcohol pads, provided clean the surface where Base Plate will be positioned.



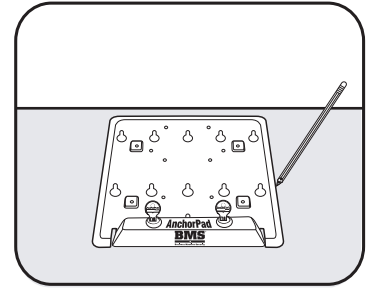
STEP 2:

Place Base Plate in final placement position, making sure the side with the three holes is facing you.



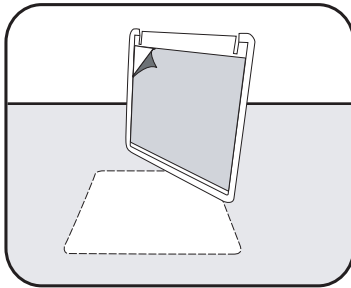
STEP 3:

Assemble the Lock Block to the Base Plate. Slide Weld-nut bar under base plate and insert keys into lock block.



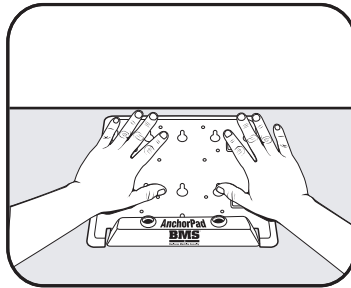
STEP 4:

Place Base Plate in final placement position. Mark position with a pencil to use as installation guides.



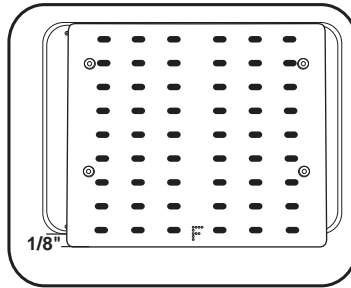
STEP 5:

Once marked, lift plate and remove protective liner from adhesive tape on bottom.



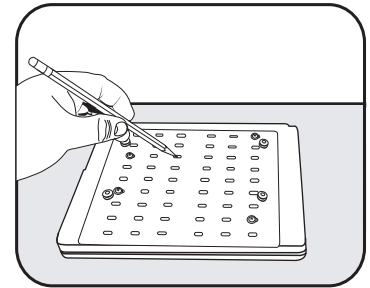
STEP 6:

Press firmly down against the plate and rotate hands in a circular motion to remove air pockets from bottom of plate.



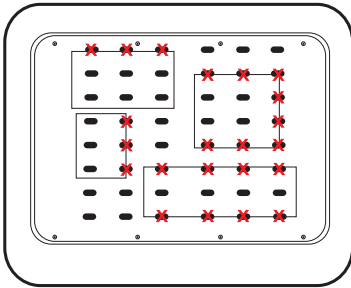
STEP 7:

Position the adapter plate on bottom of the computer. Leave about an 1/8"-inch gap past front of the laptop.



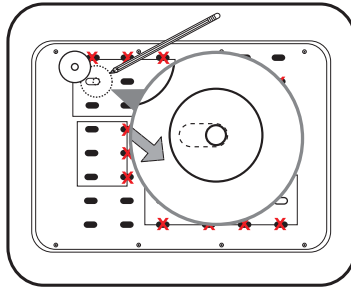
STEP 8:

Mark all possible holes where it might be a good spot to place Flex Pads. (We suggest marking all spots for quicker placement)



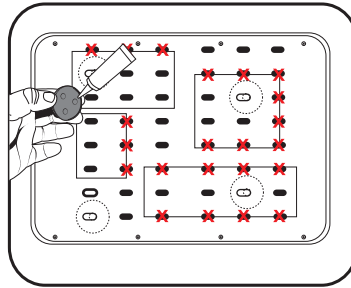
STEP 9:

Once all holes are marked. Select the best location for the pads - where Flex Pads will not block any access doors from opening.



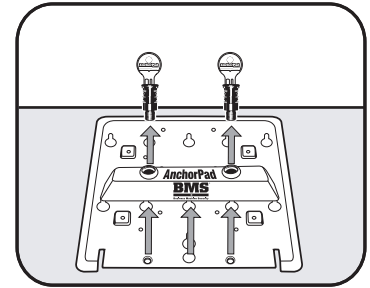
STEP 10:

Use the washer eyelet to mark the perfect placement of 4 flex pads. Make marks dark enough to be seen.



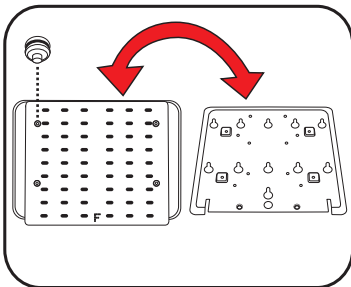
STEP 11:

Clean off any debris from Flex Pads with alcohol pad. Place small amounts of glue on each pad and stick to marked circles.



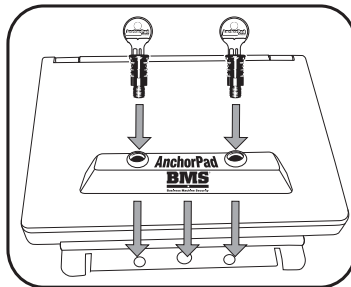
STEP 12:

Remove Lock Block and Keys from the Base Plate.



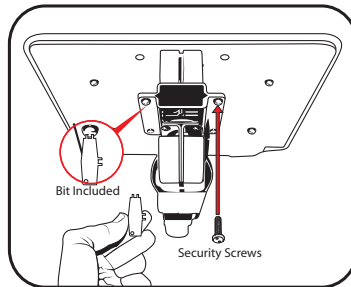
STEP 13:

Add the coupling provided and flip Adapter Plate with computer attached. Line up the steel couplings with the larger end of the keyhole. Once the couplings are in place slide the Adapter Plate towards the narrow end of the keyhole.



STEP 14:

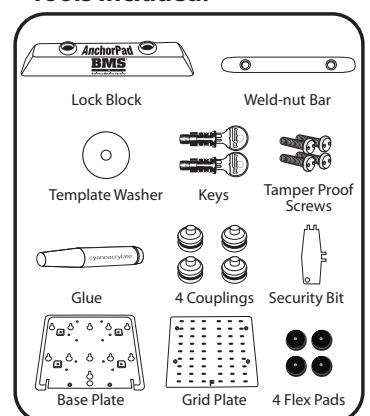
Lower Lock Block into position making sure computer fits snugly. Insert locks into Lock Block. Use keys to turn locks clockwise (do not over tighten) until fully threaded into weld-nut bar on the Base Plate and remove keys.



STEP 15:

To use with arm mount place assembled Laptop Security Stand on arm mount. Align the 4 holes on the base plate w/arm mount holes. Insert security screws from the bottom and tighten w/Bit provided.

Tools Included:



Record key code for future reference and store keys in a safe place. Questions? Please call Technical Assistance 800.626.2467